

biosense[®]
LABORATORIES

FATHEAD MINNOW VITELLOGENIN ELISA KIT

PROD. NO.: V01018401

CONTENTS

A.	Introduction	3
B.	Safety instructions	4
C.	Storage and stability	4
D.	Warranty and limitation of remedy	4
E.	Assay principle	5
F.	Kit contents	6
G.	Additional reagents and equipment required	6
H.	Important notes	7
I.	Preparation of buffers/reagents	8
J.	Assay procedure	8
K.	Calculation of results	11
L.	Single— and inter-lab validation studies	14
M.	References	15
N.	Quick guide	15

A. INTRODUCTION

Detection of the egg yolk precursor vitellogenin (Vtg) in blood and tissue samples of juvenile and male fish is a simple and sensitive biomarker for endocrine disrupting chemicals (EDCs) with oestrogenic effects (Arukwe & Goksøyr, 2003; Sumpter & Jobling, 1995). Measurement of Vtg has become an accepted routine screening test for oestrogenic and anti-androgenic effects of EDCs in fish. This EnzymeLinked Immunosorbent Assay (ELISA) can readily be combined with standard fish toxicology tests developed under the framework of governmental organizations, e.g. the OECD and the US EPA.

This ELISA is developed for a standard test species used in many ecotoxicology laboratories throughout the world, the fathead minnow (*Pimephales promelas*).



FIGURE 1:
FATHEAD MINNOW (*PIMEPHALES PROMELAS*)
PHOTO: CHARLES TYLER

B. SAFETY INSTRUCTIONS

For research use only. Not for human use or drug use. Not for clinical diagnostic use. These reagents contain sodium azide as preservative. Do not use internally or externally in humans or animals. As all chemicals should be considered potentially hazardous, it is advisable to wear suitable protective clothing during handling of this kit. Avoid contact with skin and eyes.

C. STORAGE AND STABILITY

Store the kit at 2-8°C upon arrival. Do not freeze. See expiry date on the kit box for stability of the kit. Unused pre-coated microplates should be stored airtight with enclosed desiccant at 2-8°C.

D. WARRANTY AND LIMITATION OF REMEDY

Biosense Laboratories AS (hereafter: Biosense) makes no warranty of any kind, expressed or implied, including, but not limited to, the warranties of fitness for a particular purpose and merchantability, which extends beyond the description of the chemicals on the face hereof, except that the material will meet our specifications at the time of delivery.

Buyer's exclusive remedy and Biosense's sole liability hereunder shall be limited to refund of the purchase price of, or at Biosense's option, the replacement of, all material that does not meet our specifications. Biosense shall not be liable otherwise or for incidental or consequential damages, including, but not limited to, the costs of handling.

Said refund or replacement is conditioned on Buyer giving written notice to Biosense within thirty (30) days after arrival of the material at its destination, and Buyer treating the material as outlined in the product data sheet and/or kit insert after arrival. Failure of Buyer to give said notice within said thirty (30) days, or failure of Buyer in treating the material as outlined in the product data sheet and/or kit insert shall constitute a waiver by Buyer of all claims hereunder with respect to said material.

The responsibility of all patent considerations in the use of our products rests solely with the user.

E. ASSAY PRINCIPLE

This ELISA utilises specific binding between antibodies and vitellogenin (Vtg) to quantify Vtg in samples from fathead minnow (Figure 2). The wells of microplates have been pre-coated with a specific Capture antibody that binds to Vtg in standard and sample added to the wells. A different Vtg-specific Detecting antibody, labelled with the enzyme horseradish peroxidase (HRP), is added to create a sandwich of Vtg and antibodies. The enzyme activity is determined by adding a substrate that gives a coloured product, and the colour intensity is directly proportional to the amount of Vtg present.

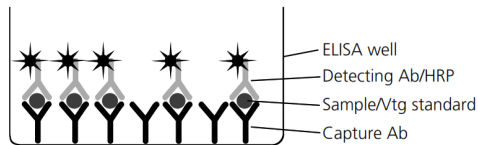


FIGURE 2: ASSAY FORMAT FOR THE SANDWICH ELISA

F. KIT CONTENT

	1-plate kit	5-plate kit
A) 96 well microplates, pre-coated	1	5
B) Plate sealers	2	10
C) Dilution buffer (5x)	1 vial	2 vials
D) PBS/Tween tablets	1	3
E) Detecting antibody, concentrated 500x	1 vial	1 vial
F) TMB substrate	1 vial	2 vials
G) Fathead minnow Vtg standard*	1 vial	2 vials
Purified, lyophilised Vtg from fathead minnow.		

*The lyophilised fathead minnow Vtg standard was calibrated against purified fathead minnow Vtg, quantified using quantitative amino acid analysis.

G. ADDITIONAL REAGENTS AND EQUIPMENT REQUIRED

In addition to the reagents supplied with the kit, the following reagents and equipment are required and/or recommended to perform the assay:

- UltraPure Water (Milli-Q or equivalent)
- 0.3M H₂SO₄ (stop solution)
- Microplate reader (wavelength 450nm)
- Pipettes with disposable tipd (5-1000 µl)
- Multi-channel pipette and reagents reservoir. Alternatively, a stepper pipette with plastic tips (100 µl)
- Test tubes (1-50 ml)
- Microplate washing device (an automatic or manual plate washer is recommended, but a squeeze bottle or a multichannel/stepper pipette can also be used)
- Vortexer
- Crushed ice

H. IMPORTANT NOTES

1. Vtg standard.

Vtg is an *unstable* molecule, and all sample and standard dilutions should be prepared and kept on ice. Reconstituted Vtg can *not* be frozen and re-used quantitatively at a later date.

A dilution series prepared from *freshly reconstituted* Vtg standard should be run in every assay. A five-plate kit contains two vials of Vtg, sufficient to run two separate assays (for example 2+3 plates). One standard curve is sufficient for a full five-plate assay.

2. Samples

The assay has been developed for quantification of Vtg in plasma and whole body homogenate (wbh) samples, but may also be used with other sample types like liver homogenates. Since compounds in the sample matrix may interfere non-specifically with the assay, usually leading to an underestimation of Vtg at low sample dilutions, the recommended minimum dilutions to avoid this matrix effect are 1:50 for plasma and 1:100 for whb (determined for adult fathead minnow diluted 1:2 [weight:volume] during sample preparation). For other sample types and sample preparation methods, the minimum dilution factor must be determined in each case.

3. Techniques

In order to obtain reliable results, several common sources of error should be avoided. Important factors to increase reliability are:

- It is vital that the washing steps of the ELISA is performed thoroughly. Insufficient washing will increase the level of background absorbance and increase variation between duplicates.
- Careful and precise pipetting at every step in the assay. Reverse pipetting of the Dilution buffer is recommended to increase reliability.
- Addition of sample and standard dilutions to the plate in triplicates, instead of duplicates, will increase reliability.
- Avoid shaking and excess foaming when preparing dilutions. Using a vortexer is recommended.

I. PREPARATION OF BUFFERS/REAGENTS

1. Dilution buffer, 5x concentrate:
Dilute the concentrated buffer (vial C) with ultrapure water, e.g. *15 ml 5x dilution buffer + 60 ml ultrapure water*.
Store at 2-8°C (stable for at least 7 days)
2. Washing buffer (PBS, 0.05% Tween-20)
Dissolve one buffer tablet (bag D) in 1000 ml ultrapure water.
Store at 2-8°C (stable for at least one month).
3. TMB Substrate solution (vial F) is ready to use. The solution should be brought to room temperature before the development reaction. Therefore, before starting the assay, measure out the required volume (12ml per plate) into a new, clean vial and place in the dark at room temperature. Keep any remaining TMB at 2-8°C.

J. ASSAY PROCEDURE

Please note: Read the complete procedure before starting the assay. For experienced users, a quick guide can be found inside the back cover of the protocol.

Preparing dilutions of standards and samples:

Please note: Vtg is an unstable molecule, and all standard and sample dilutions should be prepared and kept on ice. Frozen samples should be thawed on ice.

1. Dilution of the Vtg standard:
Dissolve content of one vial of fathead minnow Vtg standard (vial G) in 1.0 ml cold Dilution buffer.
Please note: Release the vacuum in the vial carefully. Add buffer and mix carefully by tipping and vortexing. Avoid foaming. Ensure that all material in the vial is dissolved.
Calculate the concentration of Vtg in this stock solution based on the Vtg amount specified on the vial (μg per vial). Prepare the first dilution step for the standard curve by diluting 50 μl of the stock solution in an appropriate volume of cold dilution buffer to give the solution of 50 ng fathead minnow Vtg/ml (see example next page).

Example: A vial containing 5 µg Vtg dissolved in 1.0 ml Dilution buffer gives a solution of 5 µg Vtg/ml. Prepare the first dilution step for the standard curve (50 ng/ml) by adding 50 µl of the 5 µg/ml solution into 4950 µl Dilution buffer.

Prepare a two-fold serial dilution in Dilution buffer (e.g. 500 µl Vtg dilution + 500 µl buffer for each standard curve run in the assay). The standard series should include 11 dilution steps, ending with a concentration of 0,05 ng Vtg/ml.

Keep the dilutions on ice until use.

2. Dilution samples:

Given the wide range of Vtg levels found in experimental studies, we recommend preparing at least three different dilutions for each sample in order to hit the linear part of the standard curve.

Please note: Mix the samples well before preparing the dilutions and between each dilution.

For plasma, we recommend preparing a 1:50 dilution (add 10 µl sample to 490 µl cold Dilution buffer), a 1:5 000 dilution (add 10 µl of the 1:50 dilution to 990 µl cold Dilution buffer) and a 1:500 000 dilution (add 10 µl of the 1:5 000 dilution to 990 µl cold Dilution buffer).

For whole body homogenate, we recommend preparing a 1:100 dilution (add 10 µl sample to 990 µl cold Dilution buffer), a 1:10 000 dilution (add 10 µl of the 1:100 dilution to 990 µl cold Dilution buffer) and a 1:1 000 000 dilution (add 10 µl of the 1:10 000 dilution to 990 µl cold Dilution buffer).

Keep the dilutions on ice until use

Incubation with standard and diluted samples:

Please note: When more than one plate is run in the assay, complete the addition of both standard and sample dilutions on one plate before proceeding to the next plate. See suggested layout in Figure 3.

	1	2	3	4	5	6	7	8	9	10	11	12
A	NSB	S1	S2	S3	S4	S5	S6	S7	S8	S9	S10	S11
B	↓	↓	↓	↓	↓	↓	↓	↓	↓	↓	↓	↓
C	P1	P2	P3	P4	P5	P6	P7	P8	P9	P10	P11	P12
D	↓	↓	↓	↓	↓	↓	↓	↓	↓	↓	↓	↓
E	P13	P14	P15	P16	P17	P18	P19	P20	P21	P22	P23	P24
F	↓	↓	↓	↓	↓	↓	↓	↓	↓	↓	↓	↓
G	P25	P26	P27	P28	P29	P30	P31	P32	P33	P34	P35	P36
H	↓	↓	↓	↓	↓	↓	↓	↓	↓	↓	↓	↓

FIGURE 3:

SUGGESTED PLATE LAYOUT
NSB = NON-SPECIFIC BINDING
WELLS
S1-S11 = STANDARDS 1-11
(0.05-50 NG/ML VTG)
P1-P36 = SAMPLES

3. Add 100 µl Dilution buffer to each of the two NSB wells.
Please note: NSB wells should be included on every plate. These wells are used to determine Non-Specific Binding (unspecific background signal).
4. Add in duplicate 100 µl of each fathead minnow Vtg standard dilution.
5. Add in duplicate 100 µl of each sample dilution.
6. Seal the plates and incubate at room temperature (20-25°C) for 1.5 hour.

Please note: *Ensure equal incubation time when running more than one plate. Addition of standards and samples often take several minutes. If there is a substantial time difference between plates, they can be synchronised at this point: After 1.5 hour incubation, wash the plate (step 8 below), seal it and leave at room temperature until all plates have been washed. Then proceed with addition of Detecting antibody (step 9 below).*

Incubation with Detecting antibody:

7. Dilute the Detecting antibody (vial E) 1:500 by adding 24 µl to 12 ml Dilution buffer for each plate run in the assay.
8. Wash the plates three times with 300 µl Washing buffer per well.
9. Add 100 µl of the diluted Detecting antibody to all wells.
10. Seal the plates and incubate at room temperature (20-25°C) for 0.5 hour.

Development:

11. Wash the plates *five* times with 300 µl Washing buffer per well.
12. Add 100 µl room tempered TMB substrate solution to all wells.
13. Incubate in the dark (cover the plates with e.g. aluminium foil) at room temperature (20-25°C) for 20 minutes.
14. Stop the reaction by adding 100 µl 0.3M H₂SO₄ to all wells.
15. Read the absorbance at 450 nm with a microplate reader.

K. CALCULATION OF RESULTS

Subtraction of NSB absorbance values:

On each plate, calculate the mean of the absorbance values of the two NSB wells and subtract this value from the absorbance values of all other wells on the same plate. This gives the NSB-corrected absorbance values for standard and sample dilutions.

Preparation of the standard curve:

1. Calculate the mean of the NSB-corrected absorbance values for each set of standard duplicates.
2. Plot absorbance values against the Vtg concentration. Perform a regression analysis, using for example log-log (Figure 4A), linear (Figure 4B) or a 4-parameter (Figure 4C) transformation of the data.

Please note: a 4-parameter transformation will often give a wide working range, but is best suited for standard curves with defined plateaus (as in competitive assays). Care should be taken when employing such a model in this assay. The model will be sensitive to the exclusion of data points, and the upper and lower ends of the curve should be used with care.

3. To determine the working range of the standard curve, omit data points using the following guidelines (see also example next page):
 - The correlation coefficient (R^2) should be higher than 0.990 (a perfect regression has an R^2 value of 1.0). If the R^2 value is lower than 0.990, exclude points that deviate from the line (usually at the ends) until it is above 0.990.
 - Data points that *clearly* deviate from the regression line should not be included, even if the R^2 value is above 0.990.
 - Data points with NSB-corrected absorbance values lower than 0.010 should *not* be included in the working range.

Calculation of Vtg concentration in the samples:

4. Calculate the mean of the NSB-corrected absorbance values for each set of sample duplicates.
5. Calculate the Vtg concentration in the diluted sample using the equation for the adjusted standard curve determined above (pt 2-3).

Please note: Only sample dilutions with absorbance values that fall within the standard curve working range should be used (see example next page). If all dilutions of a sample give absorbance values outside the working range, the sample should be re-assayed at different dilutions.

6. Multiply the Vtg concentration in the diluted sample with the dilution factor to get the Vtg concentration in the original sample.

Please note: If more than one dilution of a sample fall within the standard curve working range, the mean Vtg-concentration should be calculated. If the different dilutions yield contrasting results, care should be taken to determine which of the two dilutions is the most reliable one. Samples having absorbance values close to the ends/plateaus of the standard curve should be used with care, as these parts of the standard curve are less reliable. Alternatively, the sample should be re-assayed with more dilutions.

Example:

Fathead minnow Vtg standard

Vtg concentration (ng/ml)	Absorbance at 450 nm	NSB-corrected absorbance *)
50	4.589	4.535
25	3.453	3.399
12.5	1.939	1.885
6.25	1.029	0.975
3.13	0.553	0.498
1.56	0.298	0.244
0.78	0.169	0.114
0.39	0.109	0.055
0.20	0.080	0.025
0.10	0.066	0.012
0.05	0.059	0.005

*) Mean NSB absorbance value: 0.054

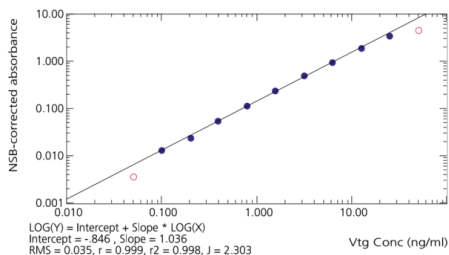


FIGURE 4A:

LOG-LOG CURVE FIT.
OMITTED DATA POINTS ARE
SHOWN AS OPEN CIRCLES.

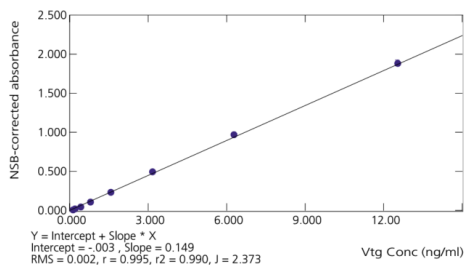


FIGURE 4B:
LINEAR CURVE FIT.

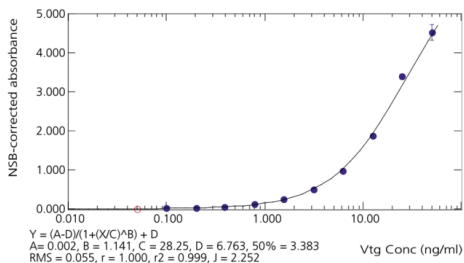


FIGURE 4C:
4-PARAMETER CURVE FIT
(SEE NOTE UNDER PT. 2).
OMITTED DATA POINT IS
SHOWN AS AN OPEN CIRCLE.

Plasma sample

Dilution factor	Absorbance at 450 nm	NSB-corrected absorbance	Concentration in original sample (ng/ml)		
50	3.032	2.977	940	over	1143
5 000	0.092	0.038	1395	1364	under
500 000	0.058	0.003	under	under	under

Calculations were made using *Deltasoft software*. Depending on the choice of curve fitting, the concentration of Vtg in the original plasma sample is between 940 and 1395 µg/ml.

L. SINGLE- AND INTER-LAB VALIDATION STUDIES

SINGLE-LAB VALIDATION

A single-lab (in-house) validation was performed based on international guidelines (Eidem *et al*, 2005a) AOAC, IUPAC, Eurachem). Vtg levels were measured in sample blanks (Dilution buffer, plasma or wbh) as well as in buffer, plasma or wbh spiked to 0.5, 2.5 and 12.5 ng Vtg / ml. The samples were aliquoted and frozen, and on five successive days three aliquots of each sample were thawed and analysed independently (n = 15 independent analyses). All analyses were performed in triplicates (three ELISA wells per standard or sample dilution). In addition, some freshly spiked samples were analysed (Selectivity, Recovery).

Selectivity (matrix effect)

No response at minimum dilution = 1:50 (plasma), 1:100 (WBH)

Calibration and working range

Linear range 0.1-25 ng/ml; 250-fold (n=15 standard curves)

Within-day repeatability precision (%CV): 6.0 %

Between-day repeatability precision (%CV): 7.7 %

Accuracy (Recovery)

75% (samples frozen and thawed once)

79-106% (freshly spiked samples)

Limit of Detection (LoD), Limit of Quantification (LoQ)

LoD 0.02 ng/ml (plasma), 0.04 ng/ml (WBH)

LoQ 0.09 ng/ml (plasma), 0.11 ng/ml (WBH)

Sample LoQ (= LOQ x necessary minimum matrix dilution)

Plasma 4.68 ng/ml (1:50)

WBH 11.35 ng/ml (1:100)

Precision

Within-day repeatability precision (%CV): 4.5 %

Between-day repeatability precision (%CV): 9.9 %

Ruggedness

Elevated buffer and incubation temperature have strongest effects on quantification of Vtg.

Comparison with existing methods:

Biosense Carp Vtg ELISA kit: $R^2 > 0.99$

Competitor FHM ELISA kit: $R^2 > 0.99$

INTER-LAB VALIDATION

An inter-lab validation was performed with four participating laboratories (Eidem *et al*, 2005b). On two different days, spiked and unspiked samples (Dilution buffer, plasma and wbh, see above), as well as naturally incurred plasma and wbh samples, were analysed.

Precision

Within-day repeatability precision (%CV): 16.4 %

Between-day repeatability precision (%CV): 18.6 %

Precision

69.4% (samples frozen and thawed once)

M. REFERENCES

- Arukwe A. & Goksøyr A. (2003) Eggshell and egg yolk proteins in fish: hepatic proteins for the next generation. *Comparative Hepatology*. 2:4.
- Sumpter J.P. & Jobling S. (1995). Vitellogenesis as a biomarker for estrogenic contamination of the aquatic environment. *Environ. Health. Persp.* 103 (suppl. 7), 173-178.
- Harmonized guidelines for single-laboratory validation of methods of analysis (2002). IUPAC Technical Report. *Pure Appl. Chem.* 74 (5): 835-855
- Eidem J.K., Kleivdal H. & Goksøyr A. (2005a) Single-laboratory Validation of a homologous ELISA to quantify Vitellogenin in the fathead minnow (*Pimephales promelas*).
- Eidem J.K., Kleivdal H. & Goksøyr A. (2005b) Inter-laboratory Validation of a homologous ELISA to quantify Vitellogenin in the fathead minnow (*Pimephales promelas*).
- Eidem J.K. et al. (2006) Development and validation of a direct homologous quantitative sandwich ELISA for fathead minnow (*Pimephales promelas*) vitellogenin. *Aquatic Toxicology* 78 (2006): 202-206.

N. QUICK GUIDE

1. Thaw samples on ice
2. Prepare dilutions of standards and samples
3. To the pre-coated plates, add 100 µl Dilution buffer to the NSB wells.
Add 100 µl of diluted standards and samples to the remaining wells.
Incubate at room temperature for 1.5 hour
4. Wash the plates 3 times with 300 µl Washing buffer per well.
Add 100 µl of diluted Detecting antibody to all wells.
Incubate at room temperature for 0.5 hour.
5. Wash the plates 5 times with 300 µl Washing buffer per well.
Add 100 µl Substrate solution to all wells.
Incubate in the dark at room temperature for 20 minutes.
6. Add 100 µl of 0.3M H₂SO₄ to all wells to stop the reaction.
7. Read the absorbance at 450 nm.
8. Calculate the results.



V01018401

Biosense Laboratories AS
Kong Christian Frederiks plass 3
NO-5006 Bergen
NORWAY

Phone: +47 55 54 39 66
biosense@biosense.com
www.biosense.com

2024.2