

Mouse anti-medaka Vtg Monoclonal antibody, CK-4B3

General description

This product consists of affinity-purified mouse monoclonal antibodies against vitellogenin from Japanese medaka (*Oryzias latipes*).

Immunogen source: Lipovitellin purified from eggs of female Japanese medaka (*Oryzias latipes*).

Subclass/isotype: IgG₁-kappa.

Specificity

The monoclonal antibody CK-4B3 binds with high affinity to vitellogenin and lipovitellin from Japanese medaka (*Oryzias latipes*). The antibody also cross-reacts to some degree with vitellogenin from other fish species including sheepshead minnow (*Cyprinodon variegatus*) and killifish (*Fundulus heteroclitus*). The degree of cross-reactivity differs between species and with the methods employed.

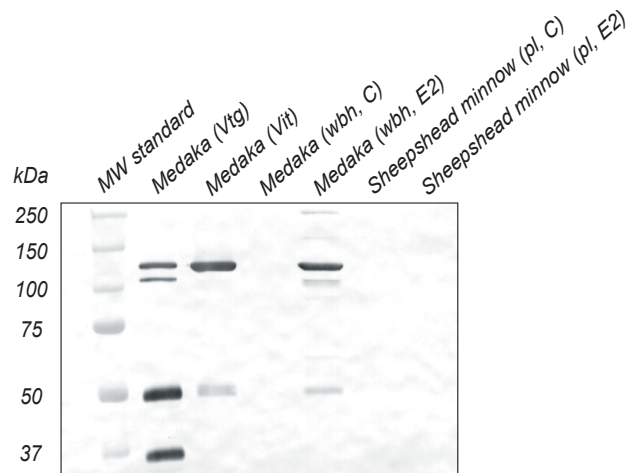
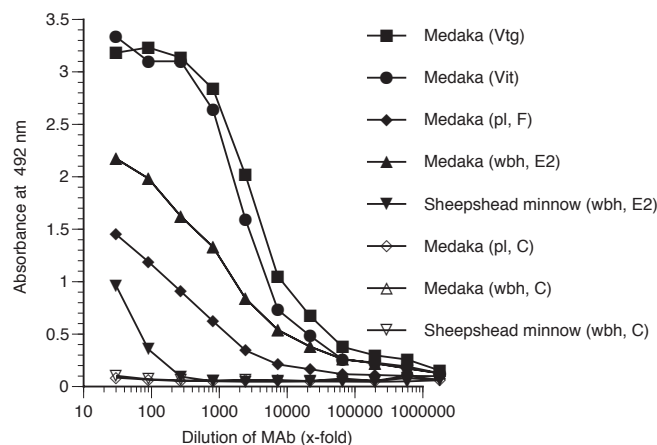
Applications

The monoclonal antibody CK-4B3 works well in both ELISA and western blot. Since assay conditions vary, the optimum dilution should be determined for each particular application. *Note*: The antibody is dissolved in a buffer containing BSA, and is therefore not recommended to use for coating.

Normal dilution range:

ELISA: 1:100 - 1:1000

Western blot: 1:50 - 1:500



ELISA

Coating: Purified vitellogenin (Vtg; 5 µg/ml) and lipovitellin (Vit; 5 µg/ml). Whole body homogenate (wbh; 1:1000) and plasma (pl; 1:1000) from female (F), 17β-estradiol treated (E2) or control (C) fish.

Primary antibody: CK-4B3

Western blot

Samples: Purified vitellogenin (Vtg; 1 µg/well) and lipovitellin (Vit; 1 µg/well). Whole body homogenate (wbh; 10 µg protein/well) and plasma (pl; 1:200, 10 µl/well) from 17β-estradiol treated (E2) or control (C) fish.

Primary antibody: CK-4B3 diluted 1:100