

## Rabbit anti-Arctic char Vtg Polyclonal antibody, PO-1

### General description

This product consists of rabbit polyclonal antibodies (affinity-purified IgG fraction) against vitellogenin from Arctic char (*Salvelinus alpinus*).

Immunogen source: Vitellogenin purified from plasma of 17 $\beta$ -estradiol treated Arctic char (*Salvelinus alpinus*).

### Specificity

The polyclonal antibody PO-1 binds to vitellogenin in plasma samples from Arctic char (*Salvelinus alpinus*). The antibody also cross-reacts with vitellogenin from Atlantic salmon (*Salmo salar*), brown trout (*Salmo trutta*), Atlantic cod (*Gadus morhua*), turbot (*Scophthalmus maximus*), flounder (*Platichthys flesus*), wrasse (*Ctenolabrus rupestris*), tilapia (*Oreochromis niloticus*) and zebrafish (*Danio rerio*). The degree of cross-reactivity differs between species and with the methods employed.

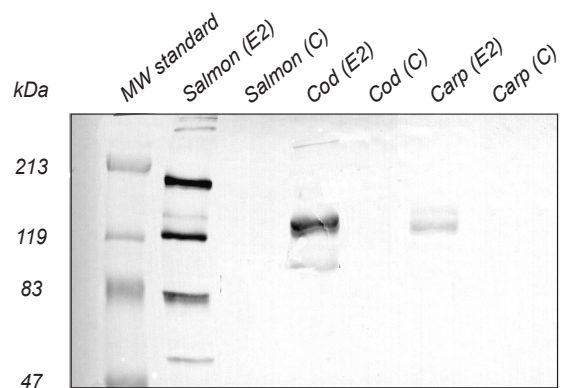
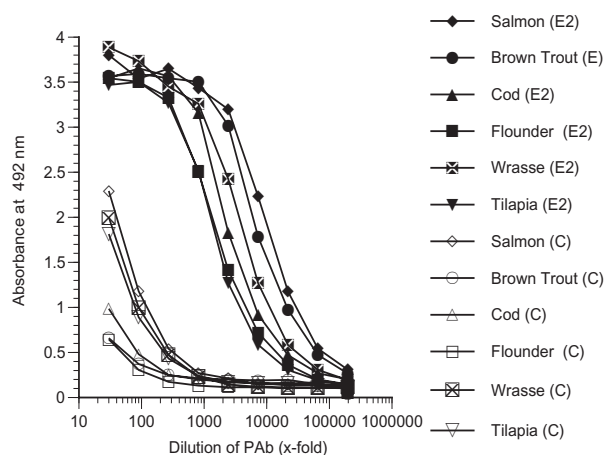
### Applications

The polyclonal antibody PO-1 works well in both ELISA and western blot for a number of species. Since assay conditions vary, the optimum dilution should be determined for each particular application. *Note:* The antibody is dissolved in a buffer containing BSA, and is therefore not recommended to use for coating.

Normal dilution range:

ELISA: 1:500 - 1:3000

Western blot: 1:500 - 1:3000



### ELISA

Coating: Plasma (diluted 1:1000) from 17 $\beta$ -estradiol treated (E2), sexually mature female (E) or control (C) fish.

Primary antibody: PO-1

### Western blot

Samples: Plasma (1:200, 10  $\mu$ l/well) from 17 $\beta$ -estradiol treated (E2) or control (C) fish.

Primary antibody: PO-1 diluted 1:3000