

Rabbit anti-cod MT Polyclonal antibody, KH-1

General description

This product consists of rabbit polyclonal antibodies (affinity-purified IgG fraction) against metallothionein from Atlantic cod (*Gadus morhua*).

Immunogen source: Metallothionein purified from liver of Atlantic cod (*Gadus morhua*).

Specificity

The polyclonal antibody KH-1 binds strongly to metallothionein (MT) in liver samples from Atlantic cod (*Gadus morhua*). The antibody also cross-reacts with metallothionein from a wide variety of different species including whiting (*Merlangius merlangus*), yellow gurnard (*Trigla lucerna*) and flounder (*Platichthys flesus*) as well as some cypriniform, siluriform, salmoniform, perciform and rajiform species. The degree of cross-reactivity differs between species and with the methods employed.

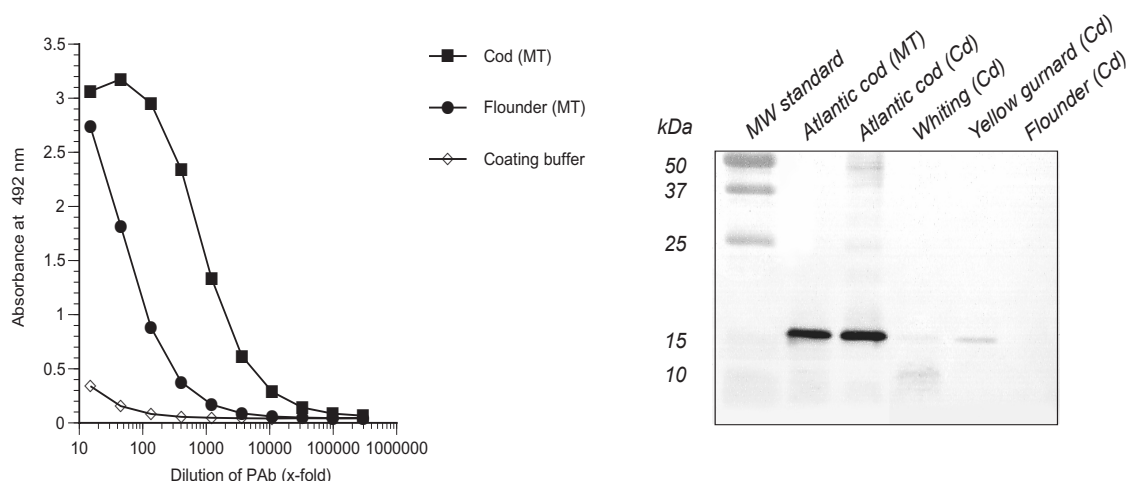
Applications

The polyclonal antibody KH-1 works well in both ELISA and western blot for a number of species. Since assay conditions vary, the optimum dilution should be determined for each particular application. *Note:* The antibody is dissolved in a buffer containing BSA, and is therefore not recommended to use for coating.

Normal dilution range:

ELISA: 1:50 - 1:1000

Western blot: 1:50 - 1:1000



ELISA

Coating: Purified metallothionein (MT; 1 µg/ml). Coating buffer used as negative control.

Primary antibody: KH-1

Western blot

Samples: Liver S9 fractions (2.5 µg protein/well) from cadmium treated (Cd) fish. Purified metallothionein (MT): 0.25 µg per well.

Primary antibody: KH-1 diluted 1:500