

Rabbit anti-fish CYP1A peptide Polyclonal antibody, CP-226

General description

This product consists of rabbit polyclonal antibodies (affinity-purified IgG fraction) against peptides 190-204 and 282-296 of rainbow trout cytochrome P450 1A (CYP1A).

Immunogen source: Synthetic peptides corresponding to amino acid sequence 190-204 and 282-296 of rainbow trout (*Oncorhynchus mykiss*) CYP1A, the latter peptide coupled to the carrier protein keyhole limpet hemocyanin (KLH).

Specificity

The polyclonal antibody CP-226 cross-reacts with CYP1A in liver samples from a wide variety of species, including rainbow trout (*Oncorhynchus mykiss*), Atlantic salmon (*Salmo salar*), Atlantic cod (*Gadus morhua*), common carp (*Cyprinus carpio*), flounder (*Platichthys flesus*), sheepshead minnow (*Cyprinodon variegatus*) and gilthead bream (*Sparus aurata*). The degree of cross-reactivity differs between species and with the methods employed.

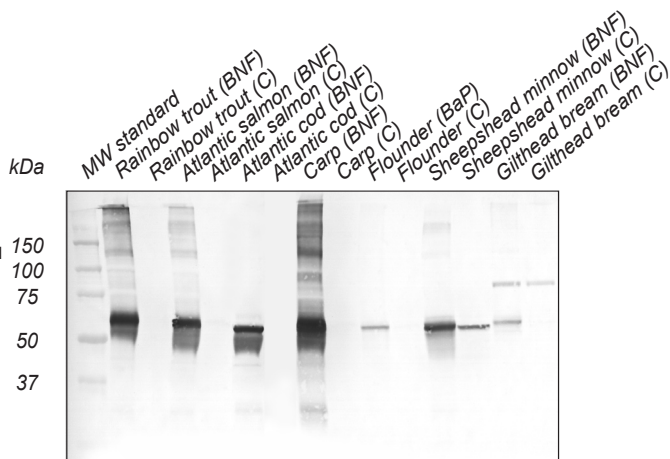
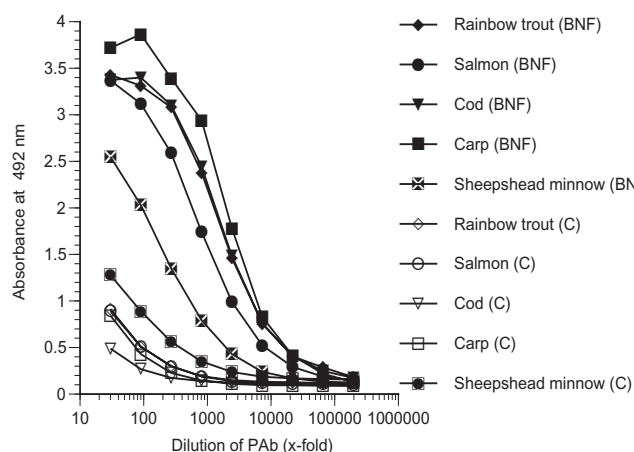
Applications

The polyclonal antibody CP-226 works well in both ELISA and western blot for a number of fish species. The antibody also works well in immunohistochemistry. Since assay conditions vary, the optimum dilution should be determined for each particular application. *Note:* The antibody is dissolved in a buffer containing BSA, and is therefore not recommended to use for coating.

Normal dilution range:

ELISA: 1:100 - 1:2000

Western blot: 1:100 - 1:2000



ELISA

Coating: Liver microsomes (10 µg protein/ml) from β-naphthoflavone treated (BNF) or control (C) fish.

Primary antibody: CP-226

Western blot

Samples: Liver microsomes (10 µg protein/well) from β-naphthoflavone treated (BNF), benzo(a)pyrene treated (BaP) or control (C) fish.

Primary antibody: CP-226 diluted 1:500